

IT6000ET

Systemec
Discover smart weighing



**W&M Approved Weighing Terminal
For Challenging Weighing And Filling Applications**

IT6000ET – Technical Data

Weighing electronics

Connection to scales with analog strain gauge load cells, entry impedance 43 Ohm–3.3 kOhm (e.g. suitable for 8 x 350 Ohm load cells), or via zener barriers, entry impedance 87.5 Ohm–3.3 kOhm (e.g. suitable for 4 x 350 Ohm load cells), W&M approved resolution of up to 6,000 d at a max. of 80 % preload, internal resolution 524,000 d, update rate selectable 50–800 updates / second, smallest load cell signal 0.33 μ V/e. Options: Connection of two scale bases via DUAL-ADM, connection of scale platforms with digital force transducers, external scale interface with ADCBox via RS485, max. cable length: 500 m.

Calibration

Clartext operator prompting. Setup as single or multiple range scale with 1, 2 or 3 ranges or as multi-interval scale. Calibration with test weights or through entry of rated output of load cell(s), option for the linearization of the load curve with up to 6 linearization points. Option to connect incline switch.

Electrical connection

110 (–15 %) to 240 (+10 %) V AC, 50/60 Hz via external power supply unit, option: 12–30 V DC, power consumption max. 20 VA.

Operating temperature

–10 °C (+14 °F) to +40 °C (+104 °F), max. 95 % relative humidity, non-condensing.

Display and keyboard

Bright, high-contrast 7" color TFT display, 800 x 480 pixel, with wide viewing angle, large weight display and 4 to 8 input lines. Touchpanel operation.

Serial interfaces

Up to 2 interfaces, selectable RS232, 20mA CL (passive), RS422 or RS485 for label printers, precision scales, remote displays, transponder card readers, etc.

Parallel and analog I/Os

Up to 4 internal optoisolated inputs and outputs, 24 V DC, or external relay / transistor module (64 inputs, 64 outputs max.). Internal 15-bit analog output, external module for up to 4 analog inputs / outputs as option.

Ethernet interface

10/100 Mbit Ethernet interface with integrated web server, WLAN as option, Modbus TCP Slave as option.

USB

USB 2.0 host interface with optional IP65 connector for PC keyboard, scanner or USB stick.

Security

Power-fail-safe storage of data, password protection, battery-backed real-time clock, remote diagnosis over Ethernet / Internet possible.

CPU / operating system

32-bit ARM processor, 266 MHz, 0.5 MB data memory, expandable. Linux based real-time multitasking operating system.

Free programmability

Comprehensive, PC-based program development and test environment. Programming with RTC WIN in 'C' in compliance with WELMEC software guidelines. Complete software development and test / simulation possible on PC.

Options

RTC WIN

IT6000ET programming environment.

PC COM+

Active X component for the communication with PC programs.

Construction/options:

Desk/wall version



- Stainless steel housing, IP69K, NEMA 4X
- For desk-top or wall-mount installation
- Dimension W x H x D: 290 x 200 x 170 mm (11.4" x 7.9" x 6.7")

Panel-mount version



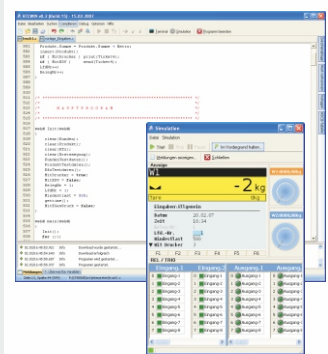
- Stainless steel housing fascia plate protected to IP69K, NEMA 4X
- Panel-mount installation
- Dimension W x H x D: 245 x 205 x 60 mm (9.6" x 8.1" x 2.4")
- Cutout in panel: 228 x 188 mm (9.0" x 7.4")

WLAN



- Option: WLX module to connect to WLAN networks (802.11b/g)
- Secure encryption selectable

RTC WIN



Directives: 2014/30/EU, 2014/31/EU, 2014/32/EU, 2014/35/EU

Standards: EN 45501, OIML R 76-1, EN 61000-6-2, EN 61000-6-3, NAMUR NE21, EN 62368-1



EU Type-examination Certificate as non-automatic weighing instrument, AGFI



NTEP approval as indicating element



ETL certified in accordance with UL 62368-1 and CSA C22.2 No. 62368-1



EMI compliance with FCC Part 15



Measurement Canada: Approval as indicating element



Russia: Approval as indicating element

SysTec Systemtechnik und Industrieautomation GmbH
Tel. +49 (0) 2238 - 9663-0 – www.systemet.com

Sales and service

Subject to change without notice

ST.2309.1464 IT6000ET_DBE.PDF 11.2020